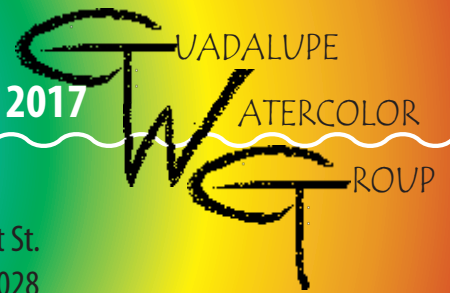


Ripples

THE NEWSLETTER OF THE
GUADALUPE WATERCOLOR GROUP
www.guadalupewatercolorgroup.com

November 2017

c/o K.A.C.C.
228 Earl Garrett St.
Kerrville, TX 78028



FROM THE PRESIDENT

Our Annual Judged Show was a huge success, with so many beautiful paintings! Thanks to everyone who participated, including all of you who volunteered to help with taking in the show and bringing refreshments to the reception. We had a great crowd there to see our work. We all owe a special "Thanks" to Doris Tyler for her hard work. She makes it happen when it comes to our show! I hope to see you all at our November meeting!

Jeanne

MEETINGS
2nd Tuesday
Sept-Nov-Jan-March-May
1:00
KACC basement
Next meeting
TUESDAY
November 14, 2017
Bring a friend!

November 14 Demo by Marsha Reeves



Marsha Reeves will do a demonstration painting using the new QoR paints at our Nov 14 meeting. QoR watercolors use a special polymer binding instead of the traditional gum arabic, are highly pigmented, and are designed to provide rich, intense color. Marsha has been experimenting with using them alone and in combination with traditional watercolors, and will be sharing her results.

Marsha will also demonstrate the new QoR Watercolor Ground, which can turn many different

substrates into a paintable ground, allowing the artist the option to create a varnished painting that does not need matting or glass. Watercolor Ground also allows the artist to recycle the paper in failed watercolor paintings, creating a new, white, absorbent surface that, compared to gesso, is more "paperlike" to paint on.



"Jack O'Lantern in Waiting",
8x10 QoR watercolors and ink on paper.

CLUB NEWS

WELCOME

NEW MEMBERS

Sharon Lindsey, Ann Marlar

VISITORS AT THE SEPT. MEETING

**Denise van der Dvier,
Barbara Heugel, Bette Robinson,
Candy Kane, Sharyn Goldman**

RAFFLE!

If you have new or gently used art related items you would like to donate for the next raffle, please bring it to the meeting.

Buy \$1 raffle tickets to win!

The money we raise will be used to help with our prizes in the next show.

HOSPITALITY COMMITTEE

Doreen Shann, Tammy Midkiff, Jean Hayes, Teresa Rabalais, Judy Hill, Connie Fluegel, Gina Jolly, and Cheryl Grundy will be supplying the refreshments at the November meeting.

Thank you for volunteering!

CARD PAINTING



Our alternate-month paint-in was Oct. 10 The artists attending had fun painting beautiful cards that will be donated to Peterson Hospital patients. Jeanne delivered them to the hospital. We won't have card painting in Dec.

MEMBERS IN THE NEWS

Virgil Carter was in the Oct 2017 issue of Artists on Art on-line magazine.

Jen Brown was featured in the fall issue of Texas Hill Country magazine!

Janet Reinwald's painting "Kayaks with Friends" was featured in the Sept. - Oct. issue of Kerr County People magazine, illustrating the Hunt women's kayak group.

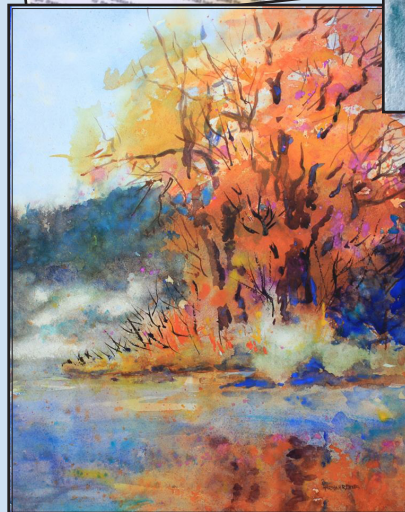
Jeanne Heise taught a watercolor Christmas Card class at KACC Nov. 4.

Marsha Reeves' painting Guadalupe Morning tied for third place in the online Autumn Colors contest sponsored by Fine Art America's "Artist Salon 1" group. Her painting was selected via votes from the public from a group of 1075 entries.

Two of **Cheryl Grundy's** watercolors won 1st, 2nd, and Best of Show at the Kerr County Fair.

Also, **Cheryl** won a competition and her watercolor was selected as the official Peterson Health holiday card!

GWG would like to recognize our members. Please let us know of your achievements.



September 2017 DEMO by Dyan Newton

Notes and photos by Marsha Pape

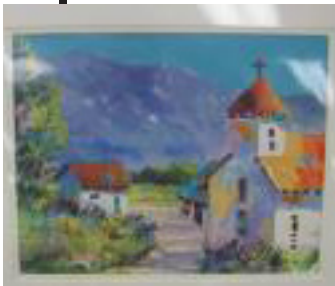


Dyan Newton lives in Abernathy. She has been painting for over 35 years. She has done watercolor, oils, pastels, acrylics, china painting and animal portraits. She had no formal training, but has attended many workshops. Dan Burt's workshop led her to leave whites on buildings and add warmth to her shadows. She is signature member of the Western Federation of Watercolor Societies and Artists of Texas.

Dyan works on back side 140 lb Arches paper which she finds to be smoother. She clips the paper to a board and works wet into dry. She stands while painting and has the paper at an angle. She uses Sable brushes because they hold so much water. She said that Utrecht "Vermeer" brushes are a more affordable option than her \$300 Sable. Her flats don't need to be Sables. When painting, she likes to get in and get out, let it dry and move to another area.



She uses fresh paint and continually cleans her palette to keep from muddying the colors. Her palette has mostly Daniel Smith and Holbein transparent watercolors. She also uses Caran d'Ache watercolor crayons to refine, correct and add little dots of color. She makes up an opaque mixture the consistency of melted ice cream using Cheap Joe's American Journey Andrews Turquoise, Sky Blue and Winsor Newton's Designers Gouache permanent white which does not go on her palette that she uses for painting her skies. She can rewet this mixture, but cannot remix it. It is used to contour the trees and put in sky holes. She washes her brush immediately after applying that mixture.

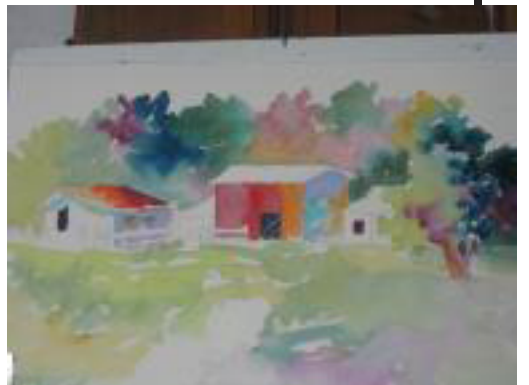


For her demo she painted some barns that she had seen outside of Boerne. She doesn't paint local color. She started with the roofs using a variegated wash of organic vermilion and permanent rose, next pure Organic Vermilion and Permanent Orange. She used Winsor Blue red shade and New Gamboge for the foreground and some trees. She said the Holbein's Cadmium Green Pale and Quinacridone Gold make a nice green. Pthalo Green and Transparent Red Oxide make a warmer green. She added in some Holbein Bright Violet. Winsor Blue green shade, Red Oxide and Quinacridone Violet



were used to make a dark. She was constantly changing the colors. The paints will dry lighter in this first stage. She goes back in to refine shapes and values

For the side of the barn she used Cobalt Blue Violet. She said that Holbein's Peacock makes pretty shadows. She paints around objects rather than using masking fluid. She used the end of a brush to scrape inside of doorways to have something interesting going on. She worked on the road using Permanent Orange, and the shadows using Cobalt Blue and Quinacridone Violet.

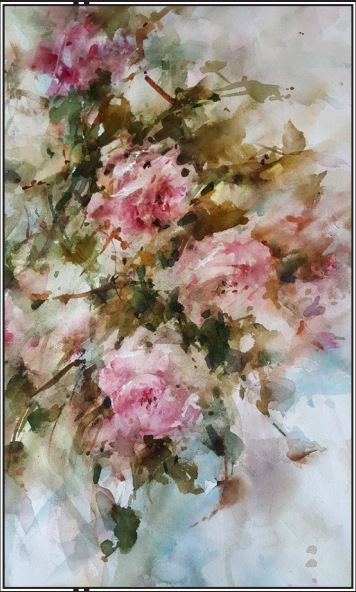


Congratulations to the winners of the 2017 Judged Show !

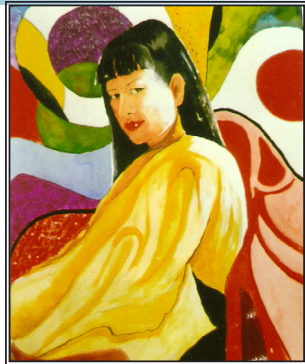
And the winner of the People's Choice award is.....

(come to the meeting to find out!)

Thanks to all those who volunteered at the show take-in!
Special thanks to Cheryl Grundy and Jean Hayes for serving at the reception!



JoAnne Spencer



Phyllis Fleming



Marsha Pape



Doreen Shann



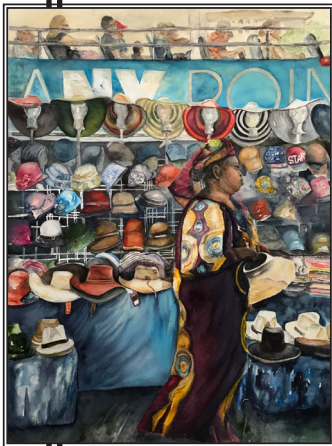
Annette Bennett



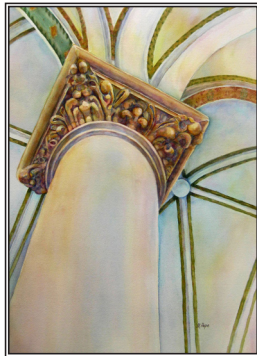
Virgil R. Carter



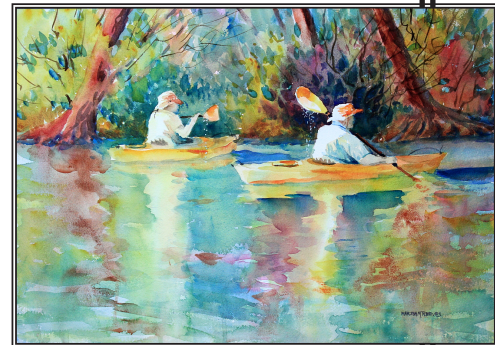
Nancy Reams Coon



Gina Jolly



Marsha Pape



Marsha Reeves



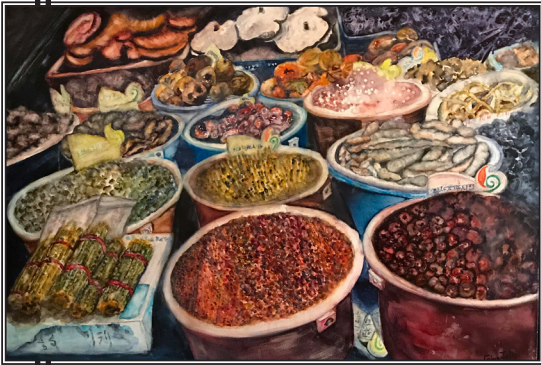
Virgil R. Carter



Mary Ann Moss



Doris Tyler



Gina Jolly



Bobbin Phelps-Gredell



Doris Tyler



JoAnne Spencer



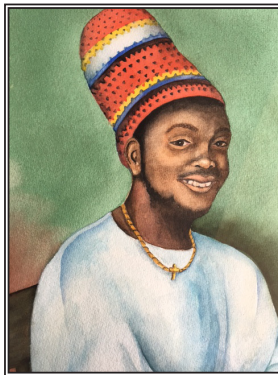
Janet Reinwald



Teresa Rabalais



Jeanne Heise



Patsy Newbolt



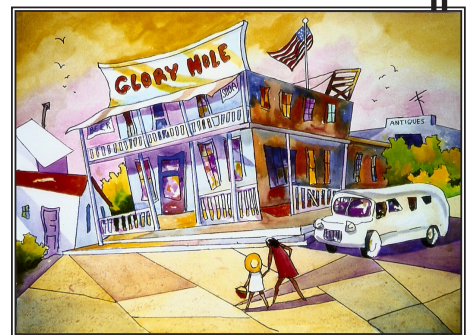
Doreen Shann



Annette Bennet



Janet Reinwald



Phyllis Fleming