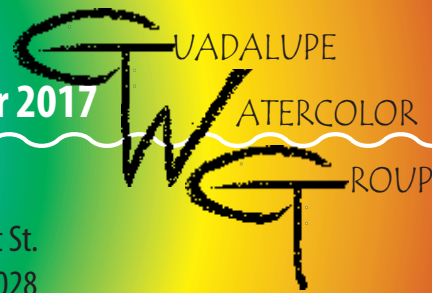


Ripples

THE NEWSLETTER OF THE
GUADALUPE WATERCOLOR GROUP
www.guadalupewatercolorgroup.com

September 2017

c/o K.A.C.C.
228 Earl Garrett St.
Kerrville, TX 78028



FROM THE PRESIDENT

Here we go again! Another exciting year is ahead for GWG, with our big annual show coming up just a few weeks from now! We have a generous prize package, as usual, and some extra special publicity for our group, thanks to the hard work of Doris Tyler and Annette Bennett. I hope you have all been painting this summer while it was too hot to do anything else. Now that some cooler weather here, I am feeling a bit more enthused. Some of us get the summer blahs! Please read this newsletter from front to back for lots of information about our club and the activities we will be offering. This month's meeting will be full of good painting inspiration from our presenter, Dyan Newton, as well as many important announcements about the show.

I look forward to seeing all of you soon.

Jeanne

MEETINGS
2nd Tuesday
Sept-Nov-Jan-March-May
1:00
KACC basement
Next meeting
TUESDAY
September 12, 2017
Bring a friend!

September 12 Demo by Dyan Newton

Dyan has been painting for over 35 years, working in watercolors, acrylics, pastels and oils. She has studied with well-known local and national artists. Throughout the years, Dyan has developed her own impressionistic style of painting, recognizable by her lively brushwork and bright, vivid colors. Her love of painting is evident whether she is painting landscapes, portraits, animals or florals.

Dyan has won numerous awards throughout her career and her paintings are in private and corporate collections throughout the U.S. and internationally. She also teaches classes/workshops throughout the year.



She has been featured in Southwest Art Magazine, American Art Collector, and is a Signature Member of the Artists of Texas and Western Federation of Watercolor Societies.

www.walkingdots.com
www.dyannewton.com



CLUB NEWS

WELCOME

NEW MEMBERS

Deborah Russell

Lori Porter

Carol Seminara

VISITOR AT MAY MEETING

Nancy Hood

RAFFLE!

If you have new or gently used art related items you would like to donate for the next raffle, please bring it to the meeting.

Buy \$1 raffle tickets to win!

The money we raise will be used to help with our prizes in the next show.

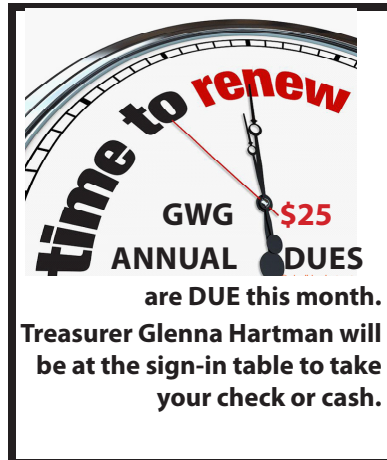
MEMBERS IN THE NEWS

GWG would like to recognize any member who has won awards or been in shows. Please let us know of your achievements.

Jeanne Heise won first place in the Hill Country Arts Foundation Juried Show with her painting "Gloaming." The show is open through Sept. 15th.

Virgil Carter had his first "cover" painting published on Russ Cahn's new Facebook site, "The Accidental Watercolorist". He used Virgil's painting, "Blue Moon Over the Guadalupe", for the site's cover painting. His painting "Round the Bend, No. 2", was selected for this year's Texas Watercolor Society annual show in Denton, TX.

Marsha Reeves had two paintings, "Grackle Drink" and "Prickly Poppy", accepted by juror Alexis Lavine for exhibit in the show titled "Exploring the Natural World in Water Media" at the Lost Pines Art Center in Bastrop, TX, from July 25-September 5, 2017.



HOSPITALITY COMMITTEE

The GWG Board members will be supplying the refreshments at the September meeting.

Everyone in our membership is asked to help with the Hospitality Committee the remaining 4 months of the year - Nov. - January - March - May. Please sign up at the Sept. meeting for the month you would like to serve.

CARD PAINTING

Our alternate-month paint-in was June 13. The artists attending had fun painting 25 beautiful cards that were donated to Peterson Hospital patients. Jeanne delivered them to the hospital.



"Gloaming"



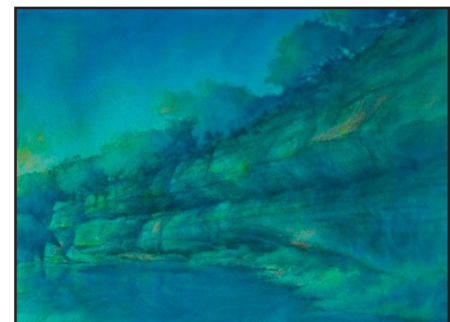
"Prickly Poppy",
20x20



"Grackle Drink",
11x16



"Round the Bend, No. 2", 18 X 24



"Blue Moon Over the Guadalupe", 22 X 15

JUDGED SHOW

Our 24th Annual Judged Exhibition will open September 28 and run through October 21.

Take in for the show will be

**Monday September 25
from 11:00 am until 1 pm.**

We will be in the larger Avery Gallery.

I hope all of you have been diligently painting this year and are ready to enter your work in the Fall Show. Take in will be on Monday, September 25 from 11am to 1 pm. Please remember to have your entry form filled out when you arrive. Early birds will be seated in a waiting area.

I want to give special thanks to members who have already donated their time and efforts toward making this our best show ever. Jeanne reminds me when I forget something really important--like reserving the gallery for the show and finding a judge. Janet has done a stellar job on our newsletters but also makes fliers for the show and creates the show catalog with photos of the winners. Glenna keeps up with all the prize money that is donated. Annette Bennett volunteered to help me with promotional advertising in local businesses and radio stations as well as sending articles about our show to magazines and publications.

With all the help we have already received, there is still much to do. At the next meeting on September 12, I'm asking everyone to pitch in by handing out fliers in your churches, clubs, and businesses. We will also need volunteers at take-in. There will be a sign up list for this at the meeting.

Be sure to listen to the "Talk About Texas" radio show being broadcast from KACC from 8:30 to 9:30 am on September 30. It will be highlighting our GWG show at KACC, our members, and encouraging listeners to come to our show! The program, emceed by Roy Holley of San Antonio, will air on KKYX at 680 KM and also on Tune In or I Heart Radio at 680 FM KKYX or on line at KKYX.com.

The reception and award presentations will be held on Saturday, September 30 from 2 to 4 pm.

Doris Tyler, Show Chairman

Please read the Judged Show rules (Prospectus) on Page 5.

- **Remember to be taking *high resolution* (300 dpi) photos of your paintings as you finish them, and before they are framed.**
- **Paintings under glass do not photograph well, and they look bad in our catalogue.**
- **If you do not send in a photo your work, it will be disqualified from receiving top awards.**
- **Email your digital photos to:
*janetreinwaldart@gmail.com***

GWG Judged Show Reminders!

- Limit your TOTAL size of your paintings to 2000 square inches
- Take photos of your paintings BEFORE framing
- Paintings must be at least 80% water media
- There will be no restrictions on matting and framing except for the NO GLASS rule.
- You may enter 3 framed paintings, and 10 matted paintings.
- No giclees will be allowed, either framed or unframed.
- All paintings must be original, from the artist's own photographs.
- If dues are not paid by day of show, there will be an extra \$5 charge, and you will need to bring entries after 12:00 noon.
- Pricing: Framed: nothing under \$100.
Unframed: nothing over \$100.
- For complete details, see the Prospectus on page 5.

AWARDS FOR OUR SHOW

All framed paintings will be eligible for cash and merchandise awards. If you would like to donate a cash award from your group or in memory of a family member or others, please contact Doris Tyler.

This year our show will have over **\$1,450 in cash awards** as well as numerous merchandise awards.

Juror for our Show LESTA FRANK

Lesta earned a Bachelor of Fine Arts Degree from Cranbrook Academy of Art, and a Master of Fine Arts degree from Rochester Institute of Technology.

Publications:

2017- Article, *Art Journaling Magazine*

2012- Book: *Contemporary Painters*

Awards:

2009-*San Antonio Watercolor Group Show- Equal Merit Award*

2007- *Texas Watercolor Society Show- Camellia Artists' Materials Award*

2007-*Coppinni Art Academy- First Place, Artist of the Month Award*

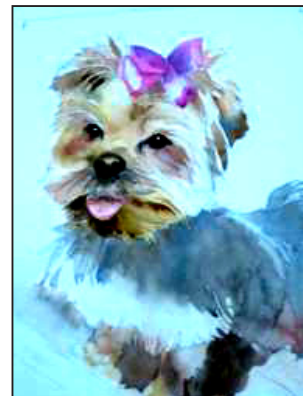
May 2017 DEMO by Lesta Frank

Notes and photos by Marsha Pape



Lesta Frank did a demo of a pet portrait of Nikki. She used a photo that was emailed in its original size to the printer. It was then blown up to the 11 X 14 size and printed. The UPS store was able to do that for less than one dollar. She traced the dog on Fabriano Artistico Soft Press 300lb watercolor paper to ensure that her proportions were correct. She next goes back and doctors up the drawing looking for shapes. She draws and paints at an angle so that her eye is perpendicular to the page to avoid distorting the image. She prefers to stand at her drafting table when working in her studio. She uses a variety of brands of paints: Daniel Smith, Holbein Viridian, Schmincke Cerulean Blue, Winsor Newton Quinacridone Magenta and Jaune Brillant. She uses Winsor Newton Neutral Tint in place of using black. It will make a darker tone without getting muddy. She doesn't use cadmiums due to their toxicity.

She painted her demo piece on dry paper placed at an angle. She likes drips. She usually will use Pebeo Masking Gum to save the whites of whiskers or highlights. This time she painted around areas where she wanted to save the light. Using a large flat 1" brush she began painting large areas of tone using a mixture of Burnt Sienna, Red Orange and Quinacridone Gold. She puts on layers, starting really light and building up to dark. She used a lot of browns. She uses her brush to put down paint and pick up excess paint and soften areas. She painted areas and tones versus painting every little hair of the fur. She drops in water to soften areas. She has a jar of Dr. Ph Martin's Bleed Proof White to use if she needs to go back in to a place where she loses her whites. She put in the tongue color and pulled out a white highlight with a dry brush. She sometimes blots some whites, but not too much or it won't look like a watercolor. After it was dry she put the shadow on top of the dry color. For the nose she used Sepia, Burnt Sienna and Ultramarine Blue. She uses her whole arm for bold strokes that aren't "niggly." She moves her fingers to the ferrule of the brush for more control when doing detail. She mixed Sepia, Burnt Sienna and Ultramarine Blue for a dark behind the pebeo on the ear. She used the side of the brush to soften. She beefed up the pink of the bow, added some darks and lifted out highlights.



Lesta Frank Pet Portrait Class

Lesta did a demo of one of two Great Pyrenees dogs in this pet portrait. The other dog was done on day 2 of the class. She used pebeo masking gum and a ruling pen for the whiskers and several highlights. She cautioned us to use it only when it is really called for because it can leave hard edges. Pebeo is the only masking fluid that can be used with a hair dryer. It should be removed within a few weeks at the latest. She mixed a creamy color to lay down as the first layer using Quin. Gold, Quin. Burnt Orange, Quin. Burnt Sienna and Da Vinci's Benzimid Orange (the only transparent orange). For the shadow areas she used Alizarin, Burnt Sienna and Ultramarine Blue. She went back in and layered in more shadows and fur.



Lesta also did a demo of stamping a background. She cut out contact shelf paper in the shape of the dog's head. She stuck it on the painting of the dog. She did a variety of techniques on the background, with Martha Stewart Craft Acrylic in satin finish (@ Michaels) a sponge trim roller. She used stamps, corrugated cardboard, stencils, book foil, etc.

