

# Ripples

THE NEWSLETTER OF THE  
GUADALUPE WATERCOLOR GROUP  
[www.guadalupewatercolorgroup.com](http://www.guadalupewatercolorgroup.com)

Sept 2016

c/o K.A.C.C.  
228 Earl Garrett St.  
Kerrville, TX 78028

GUADALUPE  
WATERCOLOR  
GROUP

## JUDGED SHOW SPECIAL

### FROM THE PRESIDENT

Has this summer gone by in a blur? It was a whirlwind of activities for me, and now I am looking ahead to another beautiful Fall season in the Hill Country. Fall always gets my creative juices flowing again, with the cooler weather and the changing colors in the landscape. That means more inspiration for painting!

As I write this your GWG Board is busy planning for the big Fall judged show. We will be in the Avery gallery at KACC, which is the largest and most prestigious gallery space for showing art in central Texas. Our group is becoming known far and wide for our wonderful and talented artists, and our shows offer the best prize package anywhere in the area. I hope you are all getting your best work together for this annual event. Please don't miss this chance to showcase your art! If you want to help in any way, let us know. We can use volunteers to take in the paintings and also to help bring refreshments to the awards reception. Contact Doris Tyler if you can help.

Starting this year, GWG has a **NEW HOSPITALITY POLICY**. We will no longer have a Hospitality Chairman. Now everyone in the club will have an opportunity to participate in bringing refreshments for the social hour. Hear details at the September meeting.

See you then. Jeanne

Next bimonthly  
meeting

TUESDAY

Sept. 13, 2016

1:00 KACC Forum

If you are entering  
the show, be sure to  
**print the Prospectus  
and entry forms on  
pages 6 & 7**



### September 13 Program and Demo by Jan Heaton

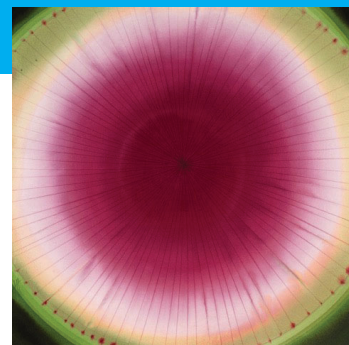
#### ARTIST'S STATEMENT

My paintings are personal observations of color, movement, relationships and forms in nature. I prefer the watercolor medium, as I love paper, and the tactile manner in which the pigment integrates with the paper. Painting on cold pressed 100% cotton paper I patiently build translucent, veiled layers of color, allowing the forms and values to evolve in a detailed and orchestrated manner. The images are not restricted by the paper's edges. Every random mark is there because it needs to be there. The "happy mistakes" are planned and controlled.

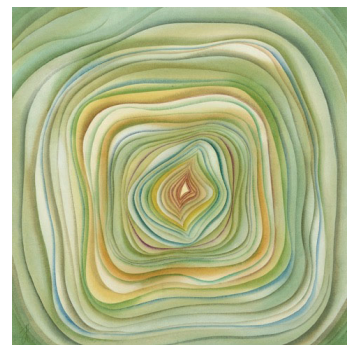


"Traverse City Cherries"

The circular orbs in my current work are simple, bold, direct, sensual, playful and often mysterious. The sphere recalls harmony, rhythm, movement, patterns, and boundless symbolic metaphors. In my work the circle exists independently and in groups, referencing water patterns on a shore, or a rising moon, rounded fruits, or the shape of a flower. The circle reminds me of family and friends, who are very important to my creative process. My desire is that my artwork will allow the observer to see a familiar form with a unique perspective.



"Watermelon Radish"



"Artichoke"

# SEPTEMBER JUDGED SHOW

Our 23rd Annual Judged Exhibition will open  
September 29 and run through October 22, 2016

**Take in for the show will be September 26 from 11:30 am until 1 pm.**

This year we will be in the larger Avery Gallery.

## JUDGED EXHIBITION RULES

1. Originality Policy: **NO** digital art, work produced under instruction, work derived from another's intellectual property or from copyrighted references will be accepted. **NO** giclees or other reproductions will be accepted. All artworks to be shown must be wholly original in concept and execution: created from the artist's own direct observation, imagination, or from reference photos taken by the artist. Artwork derived directly from the work of another artist or photographer is strictly prohibited.
2. Framed acrylic, clayboard and WC canvas paintings are allowed as long as all other guidelines are followed. Gallery wrapped WC canvas and clayboard boxes are allowed if the edges are properly finished.
3. Paintings must be 80% watermedia, with any collage materials limited to 2 dimensions and hand-painted by the artist.
4. Paintings must not have been previously shown at KACC!
5. Entries must be framed, wired (no sawtooth hangers) and ready to hang. Ends of wire should be covered with tape. Dimensions shall not exceed 48" in any direction.
6. On watercolor paintings over 16 x 20, use Plexiglas only. Weight and safety are issues.
7. Entry is limited to GWG members, who may each submit three paintings. \$10 for one, \$15 for two, \$20 for three.

**ART MART PAINTINGS:** Up to 10 unframed paintings may be entered in the Art Mart for a fee of \$1 each. They must be matted and shrink wrapped (sealed art bags). You must enter at least one competition painting to be eligible to enter paintings in the Art Mart. Paintings may be student work and may have been shown before at KACC. Please number paintings and provide a list at time of entry.

**SALES:** KACC will handle all sales on a consignment basis and will collect sales tax. 30% commission on sold items will be retained.

**PHOTOS:** KACC may take photos to be used for publicity. GWG will take photos of paintings for publicity, catalogs, and our web page.

*Remember to be taking  
**high resolution** (300 dpi)  
photos of your paintings as  
you finish them. Paintings  
under glass do not  
photograph well, and they  
look bad in our catalogue.  
So, if you win an award, and  
you have not provided a  
"pre-framed" photo of your  
painting for us to use, your  
painting will not be shown  
in the next show catalogue.  
Please don't let that happen!  
Email your digital photos  
from **Aug. 29 to Sept. 24**  
to: **janetreinwaldart**  
**@gmail.com***

## AWARDS FOR OUR SHOW

All paintings will be eligible for cash and merchandise awards.

If you would like to donate a cash award from your group or in memory of a family member or others, please contact Doris Tyler, show chairman.

This year our show will have over **\$1,450 in cash awards** as well as numerous merchandise awards, so please enter! Lots of opportunities to win!

### Award categories:

**Floral - Abstract - Critters -  
Landscape/Cityscape -  
Amperand Aquabord  
and many Special Awards**

## Juror for our Show JAN HEATON

*See Artist's statement on page 1*

Born in Michigan, Jan is an artist who calls Austin home. Art dealers and galleries in boston, Santa Barbara, San Antonio, Marble Falls, Houston, Atlanta, and San Francisco represent her work. Jan is a faculty member of the The Contemporary Austin Art School, and a Signature Member of the National Watercolor Society.

janheaton.com



**WELCOME  
NEW MEMBERS**  
**Idell Looney**  
**Karin Shaw**  
**Donna Stein**

**GWG's WEBSITE**  
[www.guadalupewatercolorgroup.com](http://www.guadalupewatercolorgroup.com)

Be sure to view GWG's website. Thank you to all who have sent photos of paintings to be displayed on the Gallery Page. You may send more than one as they will be changed periodically and the rows rotated so everyone's painting will be in the top row at some time. If you have not yet submitted a piece, please do so soon.

### IN MEMORIAM

We are sad to report the passing of Angie Banta Brown. She was a renowned watercolor artist from New Braunfels who had led workshops and demos for GWG in the past, and was scheduled to be our Show Juror this year.

### RAFFLE!

*If you have new or gently used art related items you would like to donate for the next raffle, please bring it to the meeting.*

This month's raffle:

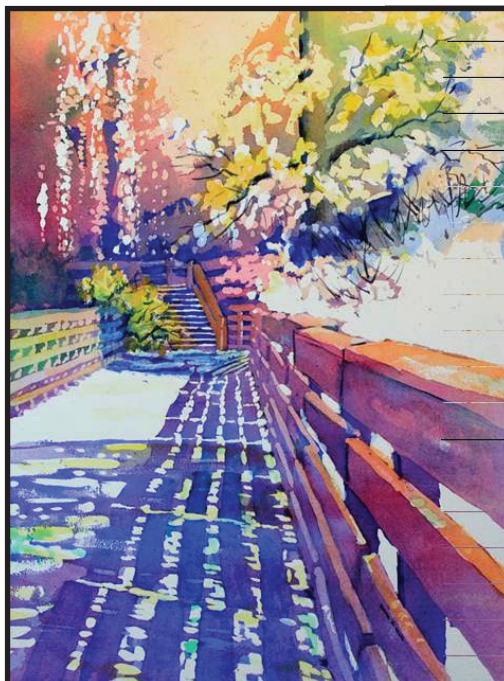
**Small light box, books, frames, watercolor paper**

**Buy \$1 raffle tickets to win!**  
Money collected will go toward the **People's Choice Award** at our show!

### DUES ARE DUE!

**S**eptember is the deadline for paying your dues! Want to keep receiving the newsletter, be in the new directory and web page? Want to receive discount cards, see great demos and improve your skills? Being a member has so many advantages and opportunities! Our treasurer Glenna Hartman estimates our actual cost per member is \$50, so our \$25 dues are quite a good value.

**NOTE: If you have not paid your current dues of \$25 by the end of the Sept. 13 meeting, you will incur a \$5 surcharge to enter the show.**



### MEMBER NEWS

*GWG would like to recognize any member who has won awards or been in shows. Please let us know of your achievements.*

Congratulations to **Marsha Reeves** for winning Best of Show in the Teacher's Show at KACC with her painting "Bridge to Tranquility III". She also won Third Place in the painting category.



### Leave a Tip!

*At our meetings we will have a jar labeled "TIPS" so that if you have just learned something on your own or in a class, or even found a good reference book, you can write up the tip and leave it in the jar.*

### THIS MONTH'S TIP:



Ask your framer to use "toggle clips" on your frame to hold the backing on. Then you can re-use the frame by easily twisting the clips to open and insert another painting.

## Planning Ahead ..... Karen Vernon Workshop

Karen Vernon will be teaching 2 workshops at KACC :  
Oct 19-21 and Oct. 26-28

**Class space is limited. If you want to sign up, contact Jeanne now at [jeanneheise@aol.com](mailto:jeanneheise@aol.com)**

Full day class - \$250. Audit morning lecture/demo only (no painting) - \$125.

The workshop will focus on Composition and Mastery of Color.  
Karen will discuss how to manipulate value, hue, intensity, and temperature, working on both paper and Aquaboard.



# MEMBER PROFILE

*We have many talented and interesting members who have lived and traveled all over the world. In order to get to know each other better we will run a column in each newsletter featuring one of our members. If you have a story to tell, please send it to Jeanne or Janet.*



## Tammy Midkiff

I moved to the tiny Texas Hill Country town of Mico eight years ago when my husband retired from the military. I must say, I am a happy transplant! I grew up in the hills of West Virginia and attended the University of Kentucky and Kansas State University working on my Environmental Biology education. After I married, I did not return to work. I volunteered and enjoyed being a stay at home wife and mother.

Once I settled into Texas and broke in my boots, I started my small business TEX-MADE.com. My new business had me visiting art and craft shows. I developed a creative itch, a desire to try something new. So, five years ago, I sign up for my first watercolor class with Beatriz Fedele. I continued with her for 3 years, learning the fundamentals of watercolor. I am currently studying with Ric Dentinger and have been with him for almost 2 years now. I feel fortunate to have them guiding me through watercolor.

I had no special awards or acknowledgements for my art, until this year when it was announced I was one of the Splash 18 winners.

People ask me how I knew about the competition. In late 2015, I answered a last call for The Artists Network, Splash 18 Contest Entries. I had never entered a publication contest before and did not know what to expect. I pulled out my iPad, filled out the application, paid a small application fee, selected an image and hit send. An email followed, thanking me for my entry.



Several months had past and I had forgotten about the Splash entry. However, while checking my email on April 14, 2016, there it was, in big letters, "WINNERS ANNOUNCED". I took a deep breath and opened the email. My eyes ran down the list of names in alphabetical order. I paused at #72, Tammy Midkiff "Gray Dog". I am still excited! Splash 18 is due out June 2017.

The image I selected was a painting I did from a photograph I took of my daughters dog. He was a scrawny little gray dog on the euthanasia schedule of a MS animal shelter. He accompanied my daughter everywhere. People would ask her, what breed of dog is he? She responded, "Gray Dog". Thus, the title of the painting.



I would urge anyone that is interested in entering publishers' competitions to have high quality images on hand and check out **The Artist Network**. Sign up is free. You will receive several free newsletters a month via email, Online class offers (free and varying cost), News on Art Magazines, North Light Shop catalog, new publications, pre-order of books and \*\*\*Announcements of Art Competitions.

**THEARTISTNETWORK.COM**

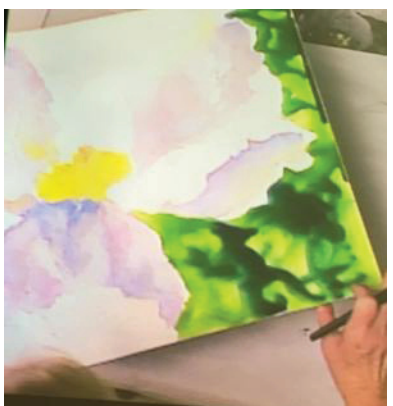


## May 10, 2016 Demo by Karen Vernon

Photos and Text by Marsha Pape

**Karen Vernon** spoke to us about Ampersand's Aquabord. It is the clay board used for watercolor that has the orange label. She claimed that her demo would be somewhat like a material & technique based "infomercial." It actually turned out to be more like a magic show which held everyone spellbound.

Karen encouraged us to enter our upcoming show. Entering competitions "pushes you" and helps you to overcome your fear of rejection. Often judges look for works where the values push against each other. A judge wants to see your passion rather than just a good rendering.



**AQUABORD:** Karen found Aquabord when she was looking for an archival way to present watercolor without it being under glass. These clay-coated wood panels are handmade using acid-neutral aspen fiber with an archival coating of a polymer base sealant. The national conservator in Washington DC said that these panels are the most archival product for an artist to work on. She has found that the colors on Aquabord are more vibrant, rich and luminous. Brilliant colors maintain their intensity allowing for a range of values. Aquabord is a very forgiving surface. You can remove some or all of the color so that you can start all over again. You can also do reverse painting on this product without harming the surface. You can get it to go all the way back to white. It will allow a water mixable pigment to be reactivated after it is dry. It is "purist watercolor" with the exception of not being on paper. The surface is a nice cross between hot press and cold press paper. Never use a kneaded eraser on it because that eraser will leave behind oil on the surface.

**DEMO:** Karen painted a California Poppy to show us the many colors of white. White is a combination of all colors. She does not use Black, Brown, Payne's Gray or Sepia. She uses Holbein Black Series Wash Brushes which are only available through Vermont Art Supply -<http://vermontartsupply.com/>. She showed us the cats tongue type Holbein Black 1080 LG and Holbein Black 1080 XLG wash brushes made with black squirrel and nylon. These brushes come to a beautiful point, have a bevel that can carry a full load for large washes. She also uses a brush she designed called a Vernon Shader for reverse painting. The shader brush allows you to sculpt with a push - pull. It is used damp or dry and gives you more control than a scrubber.

She started out with a value sketch. She then drew the design on the surface of the Aquabord. For a large, flat wash, the Aquabord should be flushed with water, allowing the air in the clay body to "bubble" out. The Aquabord turned to a mushroom color when the water was applied. Blooms that occur in watercolor were discussed and explained that this happens when the brush is wetter than the surface. They can be removed on Aquabord after the surface dries.

Karen doesn't mix the colors on her palette. She likes to let the paint do its own thing. She works with her painting flat so that gravity doesn't change the way the paint interacts. She began by dropping Vertider Blue (Holbein) paint directly to the surface of the lower petal. To warm down the value she dropped in Scarlet Lake. She starts with cools and goes to warms. Warms always push cools. Yellows always push other colors. When she paints wet into wet she controls which areas are wet. She has more success with the Aquabord at a damp level rather than a slushy wet. She added Manganese Blue Hue, then added Winsor Yellow next. She bounces around all over the painting. Some areas were done wet onto dry. She went on to add Maimeri Blu Permanent Violet Reddish. It is her favorite violet because it will push back and manipulate other colors. She drops in colors arbitrarily and lets them play around sometimes de-intensifying a color or dissolving hard lines. She glazes and does some negative painting.

In order to make the many colors of white show up, she developed extreme contrast with the background color. The flower doesn't look white until the darker values were introduced behind it. She used Sap Green and Permanent Violet Reddish because those colors don't stay mixed. They emulated the texture of the pods in the background. She also threw in Vermillion for a warm red. Other colors used in this painting were Pthalo Blue, Purple, Permanent Yellow, Cobalt Teal Blue, Permanent Yellow Orange, New Gamboge.

She uses Krylon UV Resistant Clear Spray Varnish in a gloss finish. She sprays about 3 times. She uses Golden Polymer UVLS Varnish in Satin finish found in a plastic jar for final coat. If restoration work or changes are needed after the painting has been completed or varnished, this sealant may be reversed with ammonia.

Completed piece from May 10, 2016  
GWG California Poppy demo.

You can find Karen Vernon's demo for Bold and Brilliant Colors on the Ampersand site at:  
<http://www.ampersandart.com/tips/watercolor-exercise1.html>.

View more of Karen's paintings at [www.karenvernon.com](http://www.karenvernon.com)



# PROSPECTUS AND ENTRY FORM

## 2016

### 23<sup>rd</sup> Annual

### Judged Exhibition

NAME \_\_\_\_\_

ADDRESS \_\_\_\_\_

PHONE \_\_\_\_\_

EMAIL \_\_\_\_\_

**ENTRY TAKE IN:**  
**Monday, September 26, 2016**  
**11:30 am-1 pm**  
*Please bring in paintings through the loading dock back door, per KACC*

**AWARDS RECEPTION:**  
**Saturday, Oct. 8 , 2016**  
**1-3 pm**

**ENTRY PICK UP:**  
**Sunday, October 23, 2016**  
**3 pm**

1. Originality Policy: **NO** digital art, work produced under instruction, work derived from another's intellectual property or from copyrighted references will be accepted. **NO** giclees or other reproductions will be accepted. All artworks to be shown must be wholly original in concept and execution: created from the artist's own direct observation, imagination, or from reference photos taken by the artist. Artwork derived directly from the work of another artist or photographer is strictly prohibited.
2. Framed acrylic, clayboard and WC canvas paintings are allowed as long as all other guidelines are followed. Gallery wrapped WC canvas and clayboard boxes are allowed if the edges are properly finished.
3. Paintings must be 80% watermedia, with any collage materials limited to 2 dimensions and hand-painted by the artist.
4. Paintings must not have been previously shown at KACC
5. Entries must be framed, wired (no sawtooth hangers) and ready to hang. Ends of wire should be covered with tape. Dimensions shall not exceed 48" in any direction.
6. On watercolor paintings over 16 x 20, use Plexiglas only. Weight and safety are issues.
7. Entry is limited to GWG members, who may each submit three paintings.  
\$10 for one, \$15 for two, \$20 for three.
8. SALES: KACC will handle all sales on a consignment basis and will collect sales tax. 30% commission on sold items will be retained.
9. PHOTOS: KACC may take photos to be used for publicity. GWG will take photos of paintings for publicity, catalogs, and our web page.

I verify that all my artwork submitted for this show is wholly original in concept and execution: created from my own direct observation or imagination. I understand that artwork created in a workshop or under the direction of an instructor is not allowed.

Sign please: \_\_\_\_\_

SHOW COPY

#1 Title: \_\_\_\_\_ #2 Title: \_\_\_\_\_ #3 Title: \_\_\_\_\_

Medium: \_\_\_\_\_ Medium: \_\_\_\_\_ Medium: \_\_\_\_\_

Price: \_\_\_\_\_ Price: \_\_\_\_\_ Price: \_\_\_\_\_

**Please cut here and securely attach artwork copy to the wire (not centered) on back of entry.**

ARTWORK COPY

#1 Title: \_\_\_\_\_ #2 Title: \_\_\_\_\_ #3 Title: \_\_\_\_\_

Artist: \_\_\_\_\_ Artist: \_\_\_\_\_ Artist: \_\_\_\_\_

Medium: \_\_\_\_\_ Medium: \_\_\_\_\_ Medium: \_\_\_\_\_

Price: \_\_\_\_\_ Price: \_\_\_\_\_ Price: \_\_\_\_\_

Phone: \_\_\_\_\_ Phone: \_\_\_\_\_ Phone: \_\_\_\_\_

GWG Oct. 2016 | GWG Oct. 2016 | GWG Oct. 2016

PRINT OUT, LIST YOUR ART MART PAINTINGS, AND BRING THIS FORM TO TAKE-IN.

# ENTRY FORM - GWG ART MART

## ART MART PAINTINGS:

1. Up to 10 unframed paintings may be entered in the Art Mart for a fee of \$1 each.
2. They must be matted and shrink wrapped (sealed art bags).
3. You must enter at least one competition painting to be eligible to enter paintings in the Art Mart.
4. Paintings may be student work and may have been shown before at KACC.
5. Please number the front corner of your paintings and provide this numbered list at time of entry.

**NAME** \_\_\_\_\_

FOR  
CHECK-IN  
CHECK-OUT

## ART MART TITLES

- |       |     |       |
|-------|-----|-------|
| _____ | 1.  | _____ |
| _____ | 2.  | _____ |
| _____ | 3.  | _____ |
| _____ | 4.  | _____ |
| _____ | 5.  | _____ |
| _____ | 6.  | _____ |
| _____ | 7.  | _____ |
| _____ | 8.  | _____ |
| _____ | 9.  | _____ |
| _____ | 10. | _____ |